

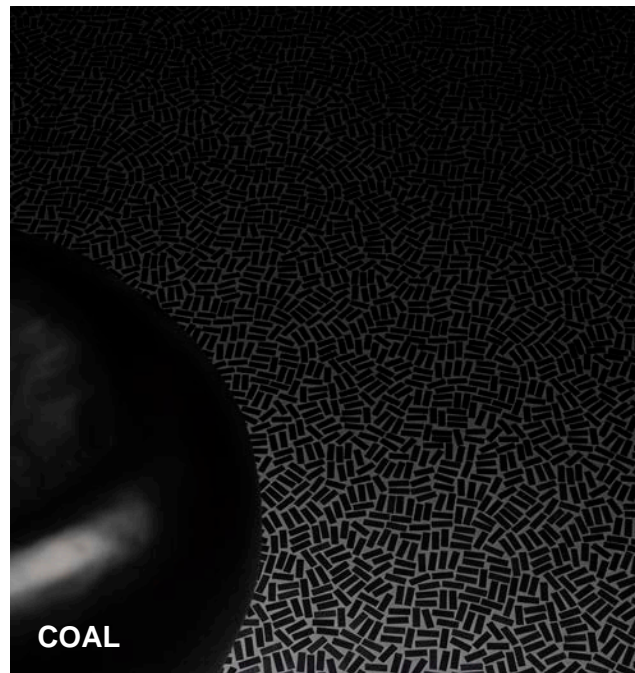


8 Colors | 1 Size | 1 Finish

# P-SAICO PORCELAIN MOSAIC

**NEMO**  
TILE + STONE







# P-SAICO

Psaico is a collection of through-body porcelain suitable for indoor and outdoor floor and wall use - made from slabs of processed material, with different surface finishes. Every piece has an irregular surface, generating a three-dimensional tactile impression. As a system of texture, various sizes and colors, any floor or wall use is rendered truly individual.



**Plaster**



**Clay**



**Smoke**



**Coal**



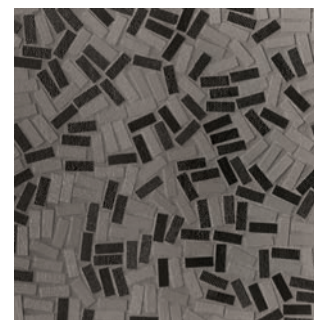
**Plaster and Clay Mix**



**Clay and Smoke Mix**

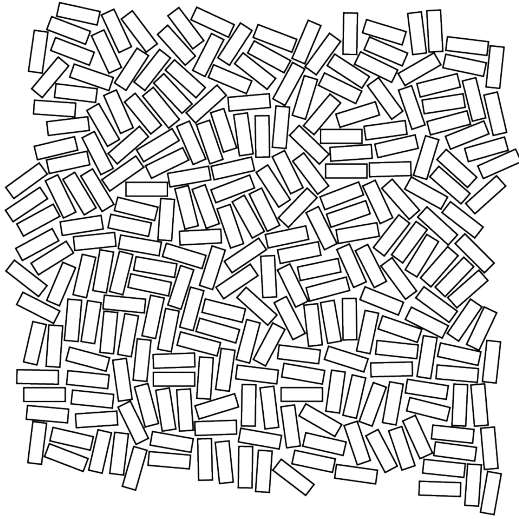


**Plaster and Coal Mix**



**Smoke and Coal Mix**

## Size



3/8"x1 3/16"x1/4"



PLASTER

## Technical Information

<b>Finish</b>	Matte	<b>Application</b>	Interior floor and wall
<b>Water absorption</b>	<0.5%	<b>Reaction to fire</b>	Class B-s1, d0
<b>Frost resistance</b>	Resistant	<b>Resistance to thermal shock</b>	Resistant
<b>Chemical resistance</b>	Group B	<b>Stain resistance</b>	Class 5
<b>Lead and cadmium free</b>	Pb< 0.01, Cd<0.001	<b>Resistance to deep abrasion</b>	PEI IV
<b>Initial tensile adhesion strength</b>	L = 5965 N As = 2.4 N/mm <sup>2</sup>	<b>Tensile adhesion after water immersion</b>	L = 3385 N As = 1.4 N/mm <sup>2</sup>
<b>Tensile adhesion strength after heat ageing</b>	L = 4870 N As = 1.9 N/mm <sup>2</sup>	<b>Tensile adhesion after freeze-thaw cycle</b>	L = 5030 N As = 2.00 N/mm <sup>2</sup>
<b>Breaking load</b>	354 N	<b>Breaking strength</b>	1984 N
<b>Modules of rupture</b>	55.0 N/mm <sup>2</sup>	<b>Slip resistance</b>	Class C
<b>Slip resistance</b>	R11		

## Packing Information

SIZE	PCS/Box	SF/Box	LBS/Box	Boxes/Pallet	SF/Pallet	LBS/Pallet
12.3x12.3	6	6.46	13.03	60	387.5	781.8