



9 Colors | 5 Sizes | 1 Finish

COVE TERRA CONCRETE PORCELAIN

NEMO
TILE + STONE

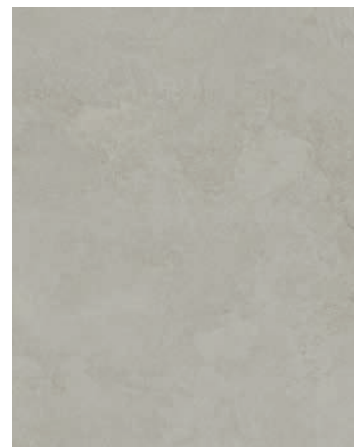
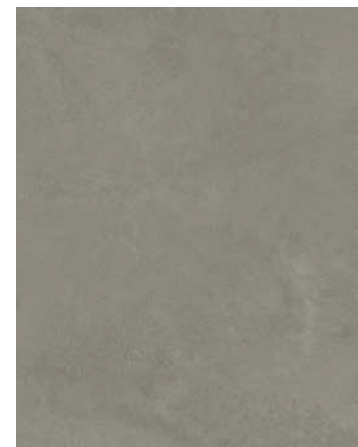
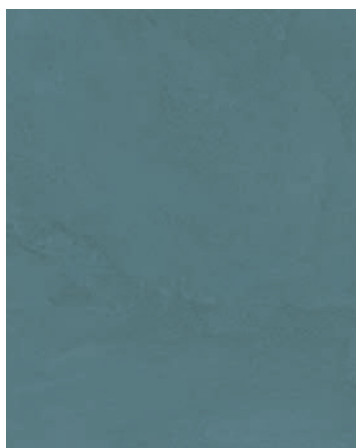


NEMO
TILE + STONE

COVE TERRA
CONCRETE LOOK PORCELAIN

COVE TERRA

Celebrating the world's most ancient building materials, raw earth and clay, Cove Terra represents a range of colors and possibilities for beautiful design in harmony with nature. The pleasantly smooth texture and vibrant pigment allow for seamless application across contemporary settings. The result is a tranquil balance between the ancient and modern world, as well as the natural and built environment. Cove Terra is offered in nine colors, standard and large sizes, with two mosaics and coordinating trim pieces.

**WHITE****SAND****ASH****PEARL****GRAY****SMOKE****JADE****DENIM****BLACK**



ASH

Carton Qty

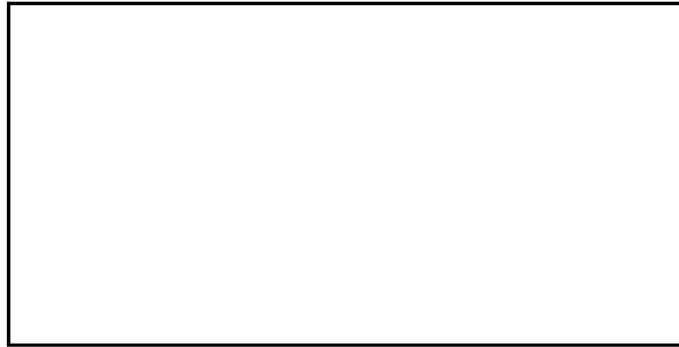
Size	Pcs/Carton	SF/Carton	Weight/Carton
24x48	2	15.50	136.42
12x24	7	13.56	55.99
3x12	15	3.39	13.46
2x2 Mosaic	5	4.84	19.55
Evo Mosaic	5	4.84	19.55

NEMO
TILE + STONE

Technical Information

Thickness(mm)	9 mm	Finish	Matte
Water Absorbtion	<0.5 %	Breaking Strength	> 350 lbf avg.
Bond Strength	> 100 psi	Frost Resistance	Resistant
Usage	Commercial and Residential	Chemical Resistance	Unaffected
DCOF	> 0.42 Wet	Stain Resistance	Unaffected

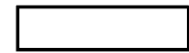
Sizes



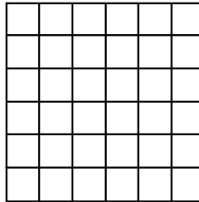
24"x48"



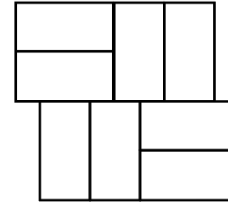
12"x24"



3"x12"



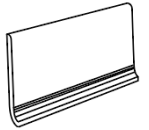
Mosaic
12"x12"



Evo Mosaic
12"x12"



Bullnose 3"x24"



Cove Base
6" x 12"

COVE TERRA
CONCRETE LOOK PORCELAIN