

5 Colors | 2 Sizes | 2 Finishes

IMPRINT DIMENSIONAL WALL TILE

NEMO
TILE + STONE



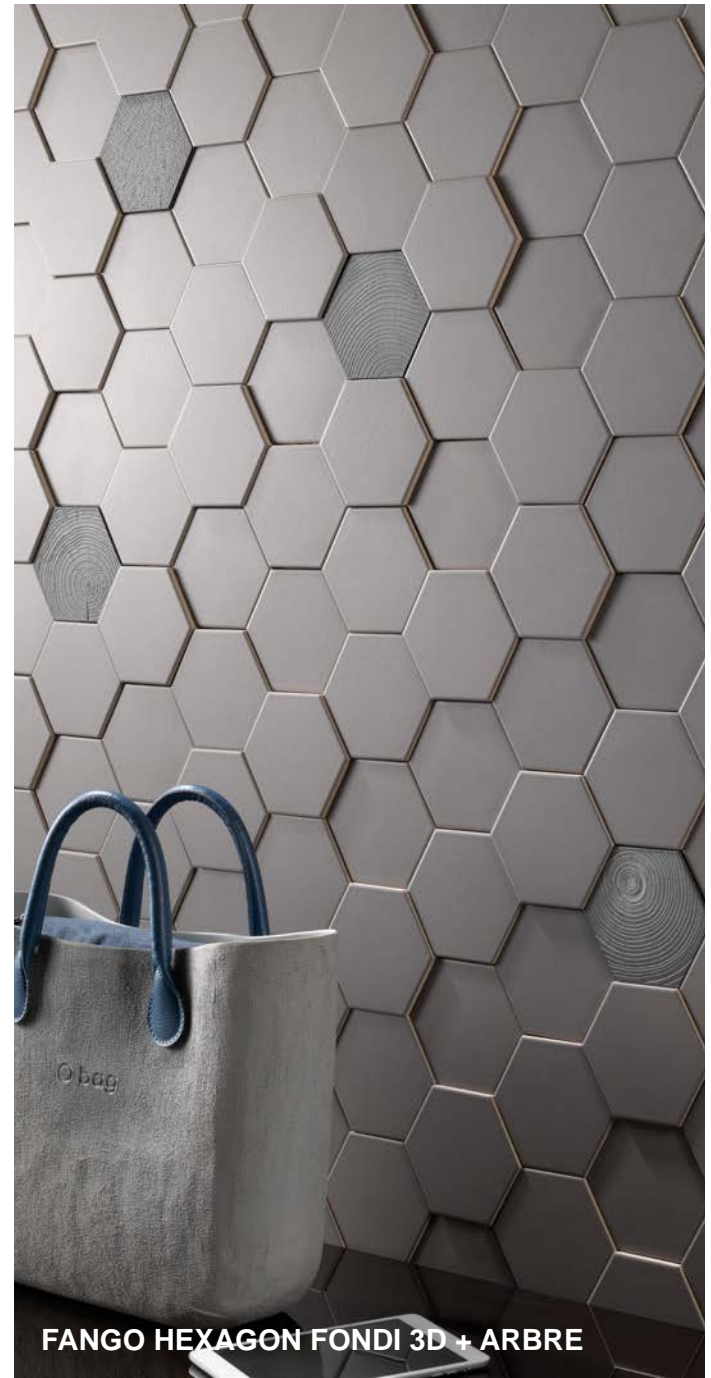
WHITE MURETTO FONDI 3D + CARTON



IVORY HEXAGON FONDI 3D



IVORY MURETTO FONDI 3D



FANGO HEXAGON FONDI 3D + ARBRE

FONDI 3D - 4"x5" | Thickness: 7mm, 10mm, 13mm



White Glossy



Ivory



Fango



Corda



Black

V1 Variation | Matte & Glossy

IMPRINT HEXAGON

The Imprint collection is a revolution in the tridimensional surface's decorative concept. With 3 different thicknesses and 2 sizes (Hexagon and Muretto) proposed in different colors and textures, this color body porcelain is extremely versatile, making it a must for a new decorative planning style.

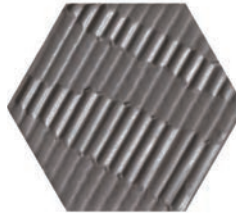
CARTON - 4"x5" | Thickness: 10mm



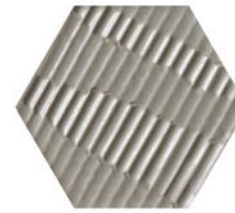
White Glossy



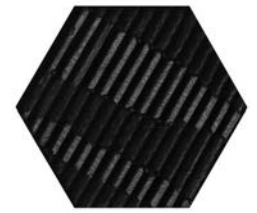
Ivory



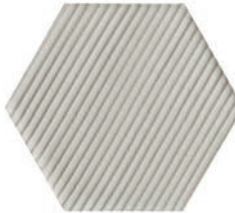
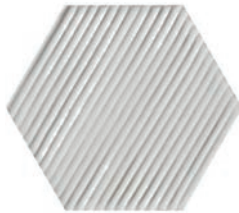
Fango



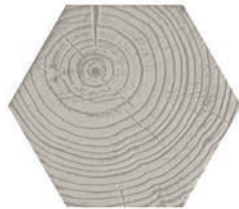
Corda



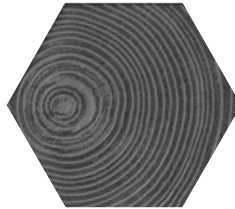
Black



ARBRE - 4"x5" | Thickness: 10mm



Ivory



Grey



Black

V1 Variation | Matte & Glossy

IMPRINT MURETTO

The Imprint collection is a revolution in the tridimensional surface's decorative concept. With 3 different thicknesses and 2 sizes (Hexagon and Muretto) proposed in different colors and textures, this color body porcelain is extremely versatile, making it a must for a new decorative planning style.

FONDI 3D - 2"x9" | Thickness: 7mm, 10mm, 13mm



White



White Glossy



Ivory



Corda



Fango



Black

CARTON - 2"x9" | Thickness: 10mm



White



White Glossy



Ivory



Corda



Fango

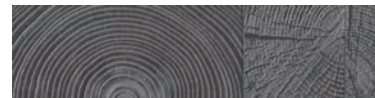


Black

ARBRE - 2"x9" | Thickness: 10mm



Ivory

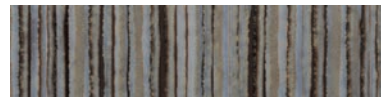


Grey



Black

BATIK - 2"x9" | Thickness: 10mm | Metallic accent piece



Batik Moka



BLACK MURETTO FONDI 3D + ARBRE

Technical Features

PROPERTY	STANDARD	RESULT
Water Absorption	ISO 10545-3	< 0.5 %
Bending Strength	ISO 10545-4	Compliant
Chemical Resistance	ISO 10545-13	A
Stain Resistance	ISO 10545-14	5
Frost Resistnace index	ISO 10545-12	Frost proof

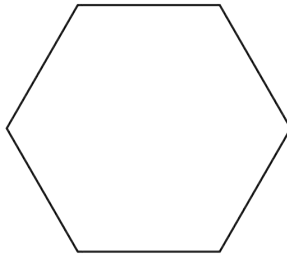
Product Information

Finish	Matte, Glossy	Application	Interior Wall
Thickness	10mm, 7mm, 13mm	Shade Variation	V1
Tile body	Full body-colored, 3D		

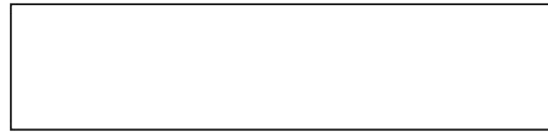
Packing Information

SIZE	SQ. ft/Case	PCS/Case	Lbs/Case	SQ. ft/Pallet	Cases/Pallet	Lbs/Pallet
2x9	6.33	42	28	310.17	49	1372
4x5 Hex	4.92	44	21	236.16	28	1008

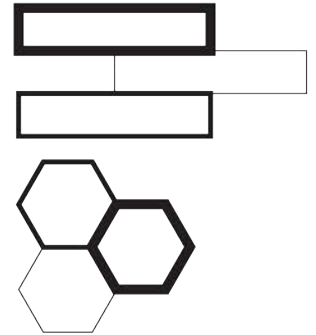
Size



4" x 5" Hexagon with
7mm, 10mm, 13mm Depths



2" x 9" with
7mm, 10mm, 13mm Depths



Staggered 3D Effect